

17 Jacaranda Avenue Rutherglen, VIC



4



2



2



Moloney



Boundaries are approx.



The Rutherglen Hemp House

This eco friendly designed home, completely concrete free, was built in 2017 from Hempcrete and lime render to create an open and sustainable lifestyle. The family home is approx 24 squares and is loaded with sustainable features and all the modern comforts making it a truly magnificent option for your North East tree change.

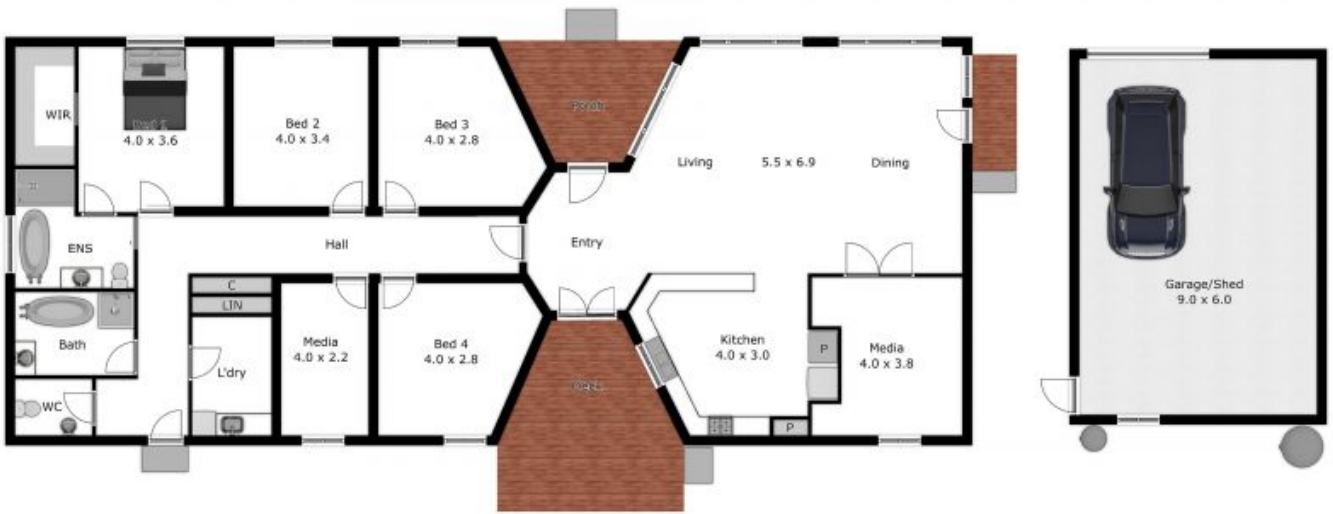
A property that is sure to impress, Contact Luke Moloney on 0447780999 to arrange your inspection today.

Luke Moloney

0447 780 999

Maddi Clark

0456 576 782



APPROX. INTERIOR LIVING AREA
 226 sq. m (24.3 sq's)
 Measurements are an approximate guide only.
 Not to scale.

17 Jacaranda Avenue

Rutherglen, VIC

Moloney
 REAL ESTATE