

1 Sanger Street Corowa, NSW



4



3



2



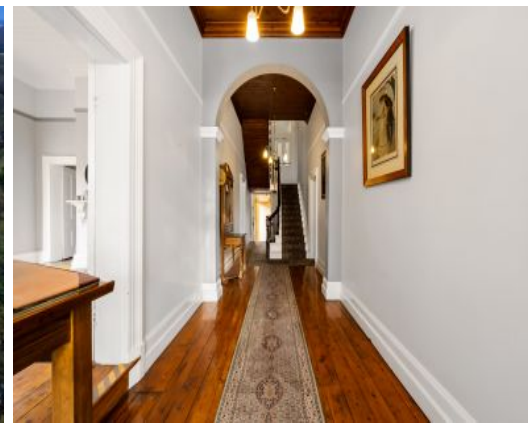
Moloney



Boundaries are approx.



Boundaries are approx.



"Easdown House"

One of Corowa's most unique and iconic landmark properties, steeped in history Easdown House was built in 1872. This breathtaking three storey historic property, which in a previous lifetime opened as a bar, functioned as a bank of New South Wales, a Red Cross base in WW2, an accountancy firm, a family home and more recently a bar & restaurant.

The grand entrance and stairwell provide way to the accommodation upstairs which boasts 4 bedrooms, 3 bathrooms and a large open ball room/lounge room.

Behind the scenes is a full commercial kitchen, a refrigerated cool room, separate laundry, huge cellar, a safe, two evaporative air co

Luke Moloney

0447 780 999

Maddi Clark

0456 576 782



1 Sanger Street

Corowa, NSW

Moloney
REAL ESTATE