



Stunning Red Brick Family Home

A stunning red brick facade and attractively situated. This 3 bedroom, 2 bathroom Howlong retreat presents a fantastic family home.

The master bedroom includes a generous size walk in robe plus an ensuite, while the remaining bedrooms are serviced by a centrally located main bathroom with a separate toilet.

Outside, the spring garden is blooming. The entire backyard is well maintained and presents a beautiful vegetation garden for any buyer to enjoy.

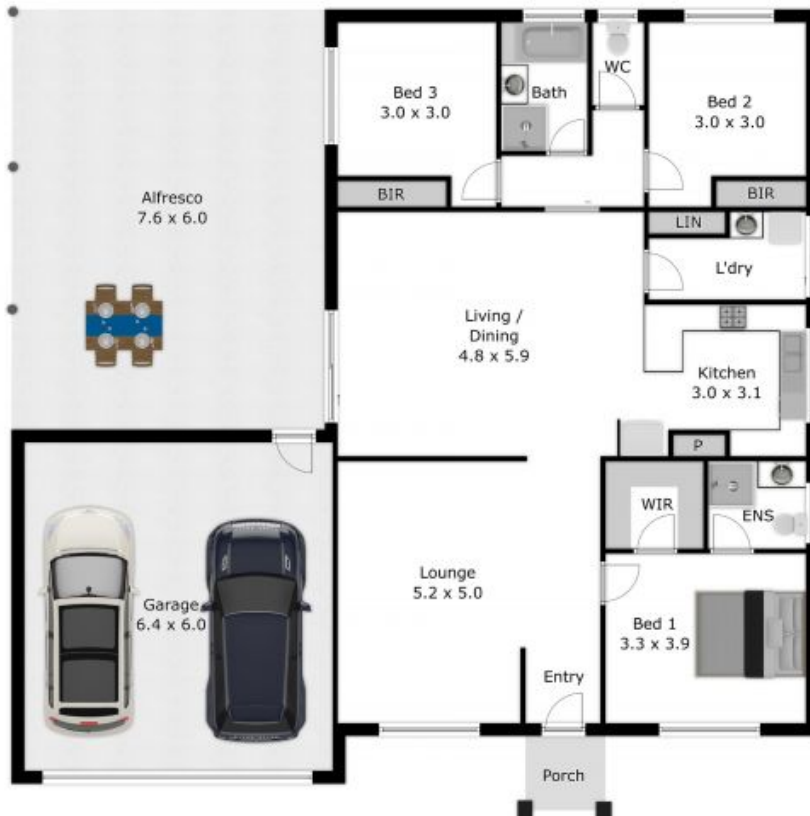
The homes further appeals comes from the doub

Luke Moloney

0447 780 999

Maddi Clark

0456 576 782



APPROX. INTERIOR LIVING AREA
 135.3 sq. m
 Measurements are an approximate guide only.
 Not to scale.