



Boundaries are approx



A family offering!

Situated in the quiet township of Howlong, this 4 bedroom home positioned in a tidy cul de sac is the perfect addition for a growing family. Located just minutes from the Main Street and the well known Howlong Golf club, is it sure to impress any buyer at inspection.

Comprising of a master bedroom completed with a walk in robe and ensuite that features a single vanity, shower and toilet. While the remaining 3 bedrooms are serviced by a perfectly located main bathroom that includes a bath, shower, single vanity and seperate toilet.

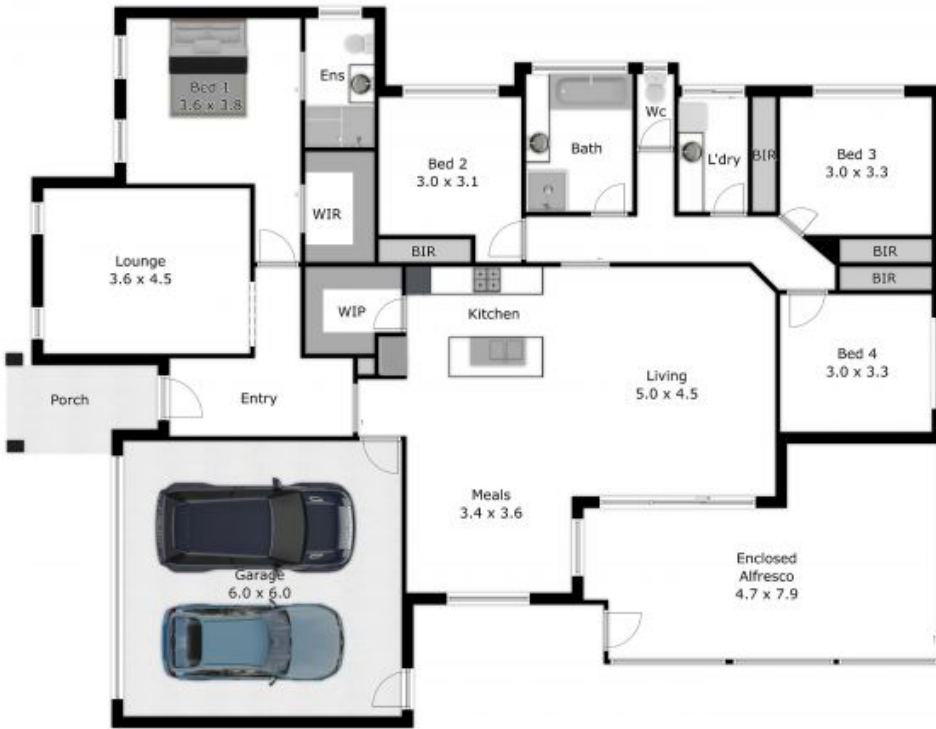
The open plan living, dining and kitchen space enjoys views of the outdoor entertainment area and the stunning established gardens that are due to be in full bloom this spring. The kitchen features all top of the range applia

Luke Moloney

0447 780 999

Maddi Clark

0456 576 782



APPROX. INTERIOR LIVING AREA
175.3 sq. m
Measurements are an approximate guide only.
Not to scale.