



## Sleek Family Home!

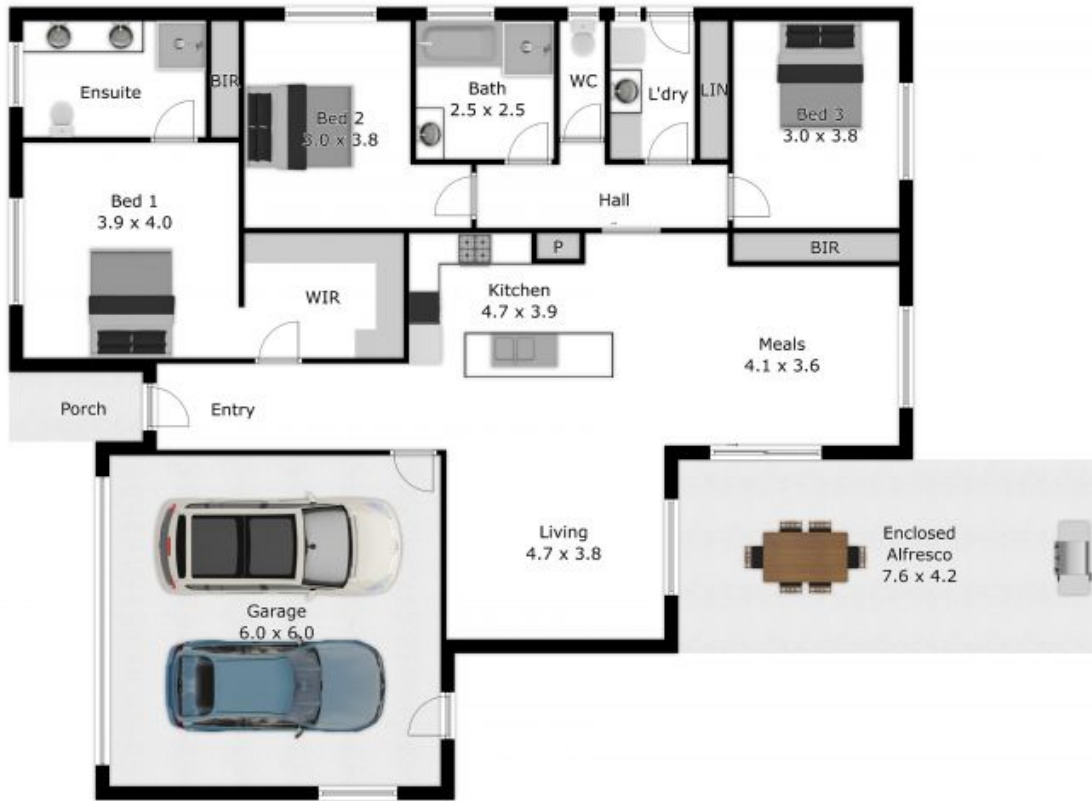
Spacious and full of natural light. 105 Tower Street is the true representation of a low maintenance family home.

Consisting of 3 fantastic sized bedrooms, the master including a walk in robe and ensuite with his and hers vanity, shower and toilet. Whilst the remaining bedrooms are located at the back of the home and serviced by a central main bathroom.

Situated on a 865sqm allotment, this low maintenance property comes with everything you may need and more. Call Luke Moloney 0447 780 9

**Luke Moloney**  
0447 780 999

**Maddi Clark**  
0456 576 782



Shed  
2.3 x 1.4

APPROX. INTERIOR LIVING AREA  
184.9 sq. m  
Measurements are an approximate guide only.  
Not to scale.