

10 Fleming Drive Corowa, NSW



3



2



2

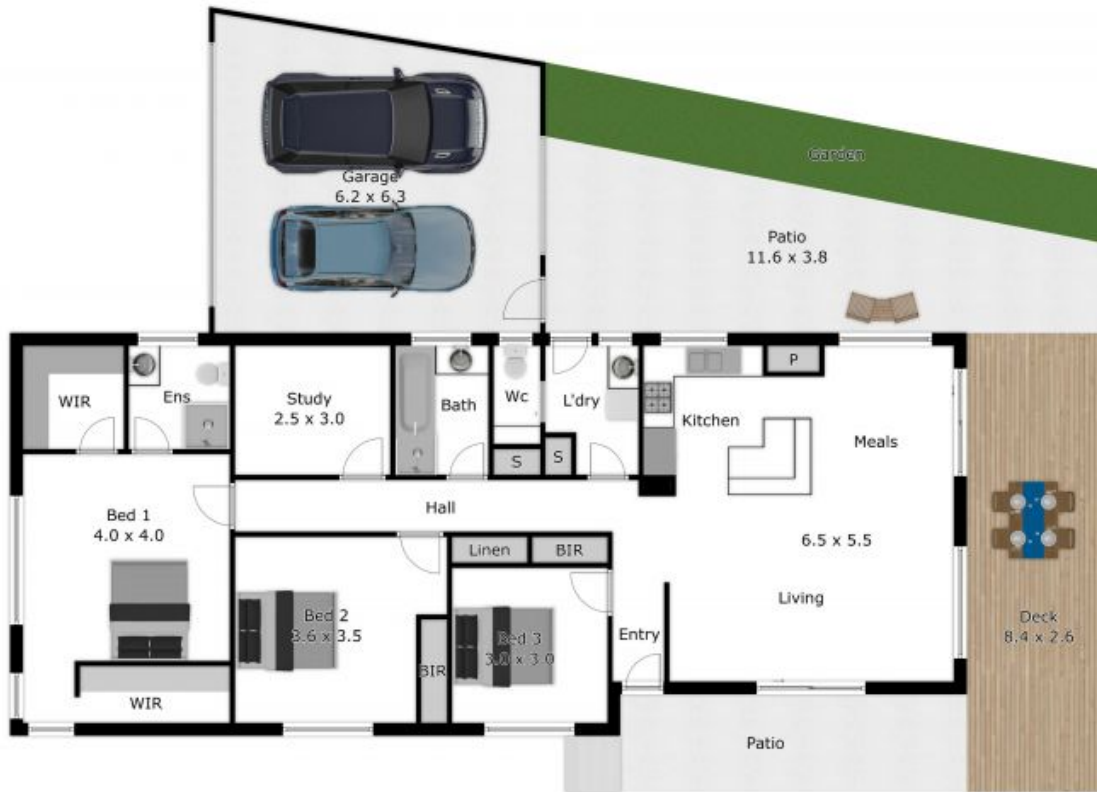


Great family home in sought-after location

Enter this lovely three bedroom home through a sun drenched patio, and you're welcomed by a spacious open plan living, dining and kitchen area with views down to the back garden.

Luke Moloney

0447 780 999



APPROX. INTERIOR LIVING AREA
 126.0 sq. m
 Measurements are an approximate guide only
 Not to scale