



South Corowa Oasis: Near Golf Club and River

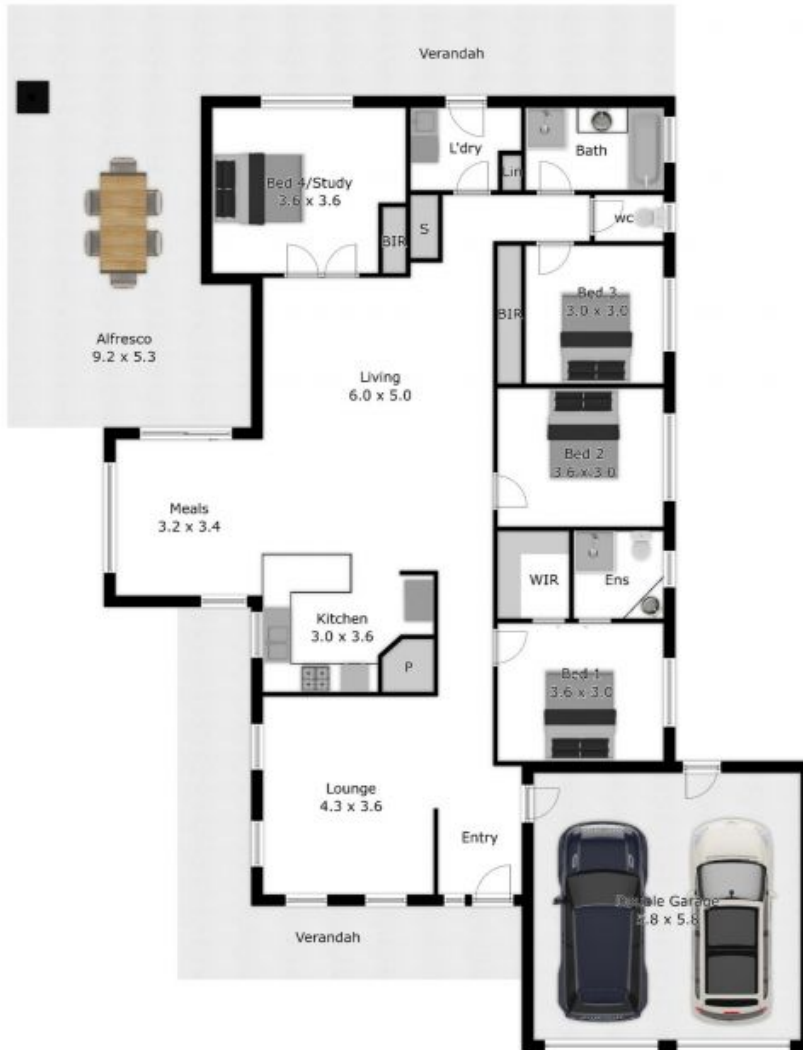
Positioned in the sought-after South Corowa neighborhood, this remarkable property offers the perfect blend of comfort and lifestyle, located less than a kilometre from the golf club and a leisurely stroll away from the picturesque river.

As you step inside, you're greeted by a spacious front living area with large windows that fill the space with natural light, creating a welcoming atmosphere.

A conveniently located study off the main living area offers versatility and can easily accommodate two separate desk areas comfortably, making it ideal for remote work or study. It has built in robes so could also be utilise

Luke Moloney

0447 780 999



76 Hume Street

APPROX. INTERIOR LIVING AREA
154.6 sq. m.
Measurements are approximate and for guide only.
Not to scale.

Corowa, NSW

Moloney
REAL ESTATE