

202 Hume Street Corowa, NSW



4



3



3



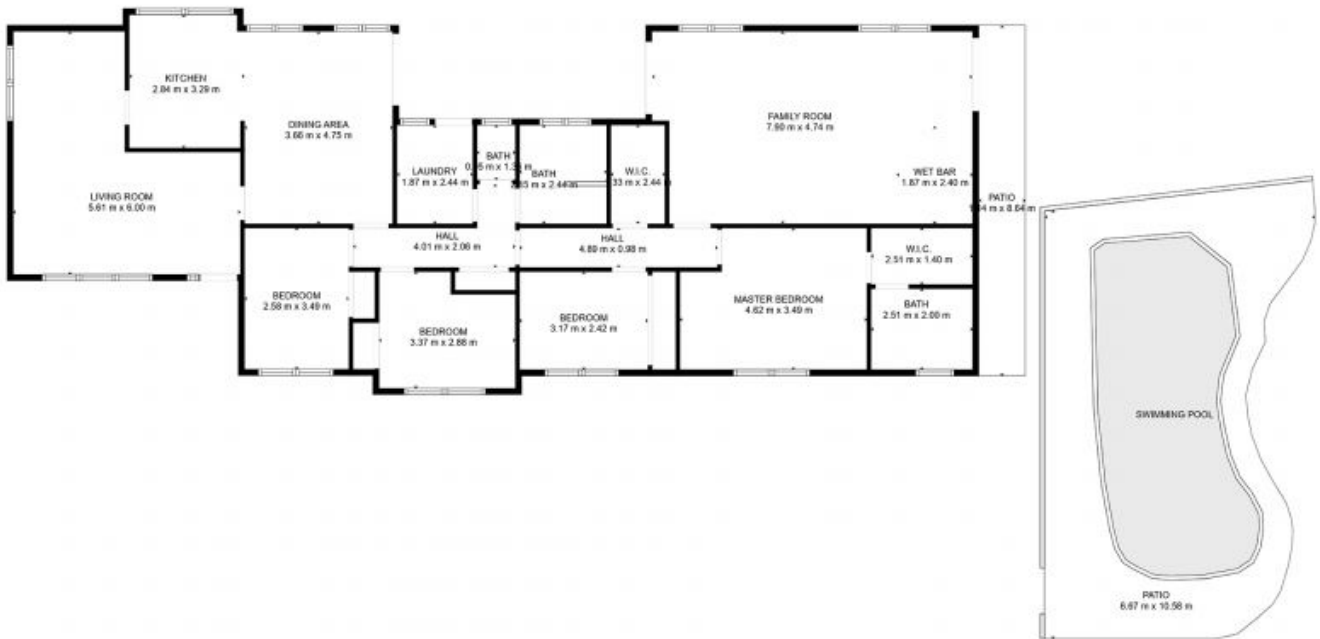
Expansive home near river and golf club

Step into the spacious formal living room, seamlessly connecting to an open-plan kitchen and dining area. The dining space extends to an expansive covered side patio, creating an ideal setting for entertaining and al fresco summer dining. The well-appointed kitchen features a gas cooktop, breakfast bar, and ample storage.

Call Luke Moloney at 0447 780 999 to arrange an inspection today.

Luke Moloney

0447 780 999



Moloney
REAL ESTATE

GROSS INTERNAL AREA
FLOOR 1: 172 m²
EXCLUDED AREAS: PATIO: 46 m²
TOTAL: 172 m²

SIZES AND DIMENSIONS ARE APPROXIMATE, ACTUAL MAY VARY.

202 Hume Street

Corowa, NSW

Moloney
REAL ESTATE