



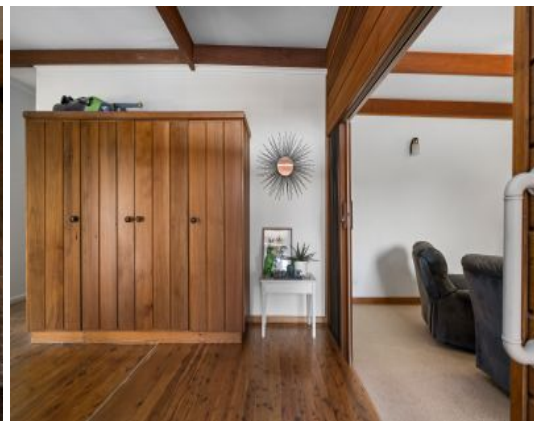
4



2



2



Classic Art Deco Residence

Welcoming and comfortable, this characteristically art deco home is within easy walking distance to all of Corowa's amenities; presenting an ideal opportunity for first-time home buyers or those looking for an easy to maintain and move-in ready property.

Offering three spacious bedrooms, the accommodation also includes a master with ensuite and his and hers walk-in robes. Character filled and complete with Murray Pine timber floorboards and exposed beams, the sunken lounge is bright and spacious.

The perfect setting for entertaining awaits outside, with a generous undercover patio and decked area that overlooks the above-ground p

Luke Moloney

0447 780 999



TOTAL: 165 m²
FLOOR 1: 165 m²

SIZES AND DIMENSIONS ARE APPROXIMATE, ACTUAL MAY VARY.

Moloney
REAL ESTATE

71 Banff Street

Corowa, NSW

Moloney
REAL ESTATE