



Landmark Victorian Estate on Over 3,500m²

Discover a truly rare opportunity to secure one of Rutherglen's landmark Victorian homes, situated on an expansive 3,500m² block over two titles in the heart of town. This period property exudes character and charm, with established fruit trees and lush gardens creating a serene oasis just moments from Rutherglen's vibrant Main Street.

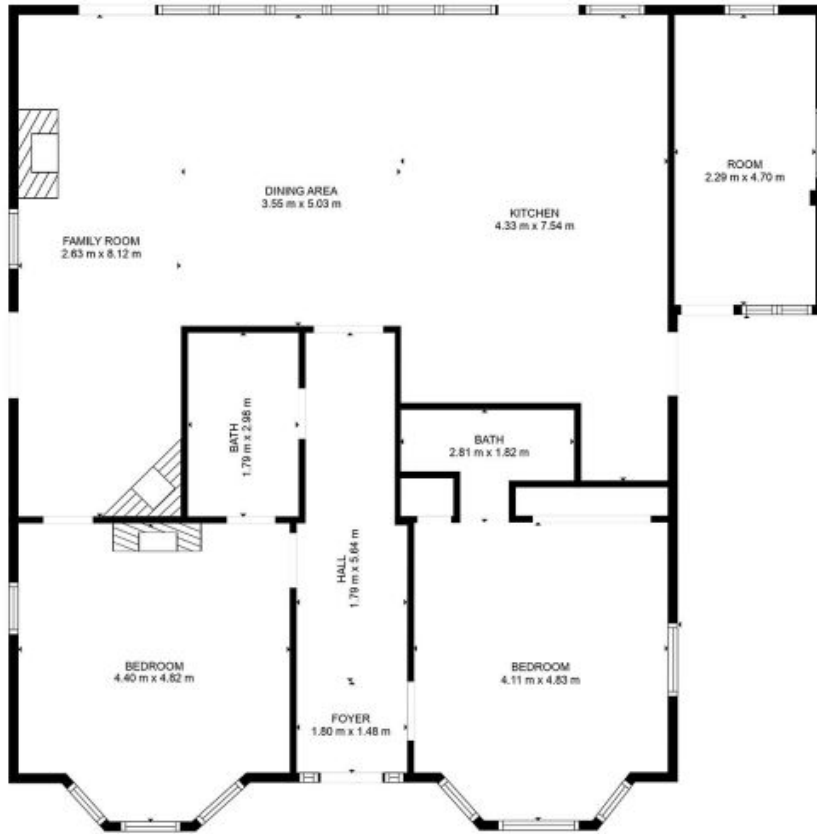
Outside, this sprawling estate offers a private oasis where you can relax or entertain under the vines that provide an opportunity to host enchanting alfresco dining experiences. The property's extensive grounds also feature water tanks, a watering system, and plenty of space for future growth or potential develop

Luke Moloney

0447 780 999

Luke Moloney

0447 780 999



TOTAL: 144 m²
 FLOOR 1: 144 m²
 EXCLUDED AREAS: COVERED PATIO: 17 m²
 SIZES AND DIMENSIONS ARE APPROXIMATE, ACTUAL MAY VARY.

Moloney
 REAL ESTATE

81 Ready Street

Rutherglen, VIC

Moloney
 REAL ESTATE