

11 Isabel Street Corowa, NSW



5



2



2

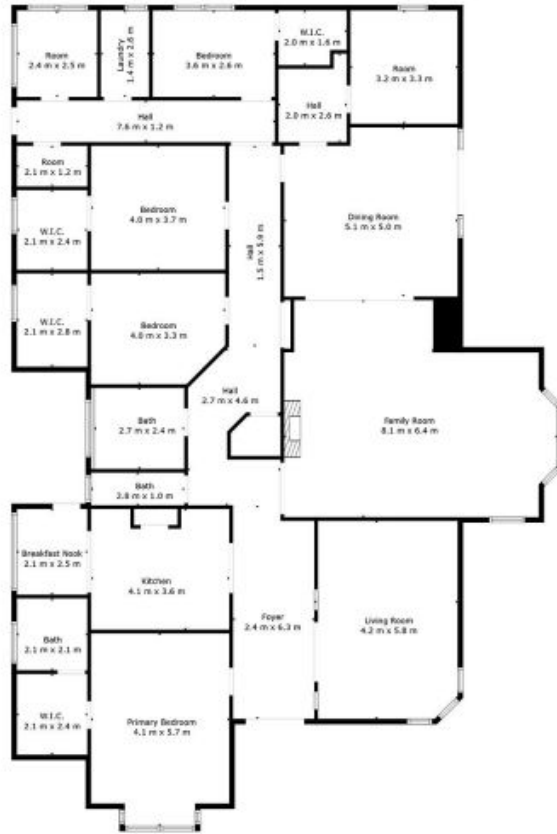


Grand Family Home in the Heart of Corowa

Situated in the heart of Corowa, this classic weatherboard home is a rare offering, combining timeless period features with modern renovations to create a warm and inviting residence. Boasting five spacious bedrooms plus a study, two bathrooms, and two generous living areas, this property perfectly blends character and contemporary comfort.

Luke Moloney

0447 780 999



TOTAL: 287 m²
FLOOR 1: 287 m²
EXCLUDED AREAS: ROOM: 3 m²

Floor Plan Created By Cubicasa App. Measurements Deemed Highly Reliable But Not Guaranteed.

Moloney
 REAL ESTATE

11 Isabel Street

Corowa, NSW

Moloney
 REAL ESTATE